

CURRICULUM.

Grade 1: Fairy tales, folk tales and nature stories; pictorial introduction to letters; form drawing; preparation for reading through writing; qualities of numbers; introduction of the four processes in arithmetic; lower multiplication tables; German; Handwork.

Grade 2: Legends and animal fables; continued work in language (phonics, reading, writing, punctuation, spelling) and arithmetic (the four math processes, odd/even, times table, place value); cursive writing introduced; form drawing; German; Handwork.

Grade 3: Stories from Old Testament history; composition and grammar; study of practical life (farming, housing and clothing); higher multiplication tables; weight, measure and money; form drawing; German; lyre instruction.

Grade 4: Norse mythology and sagas; Native American mythology; letter writing, language arts (composition and spelling); local geography and map making; study of the animal kingdom, arithmetic and fractions; form drawing; German; string instruction (violin, viola or cello).

Grade 5: Ancient history and myths through Greek times (Indian, Persian, Egyptian); American geography related to vegetation, agriculture and economics; botany; decimals, ratio and proportion; language arts; form drawing; German; string instruction.

Grade 6: Roman and medieval history; geography; astronomy; geology; physics (acoustics, optics, heat); algebra; geometry and geometric drawing; business math (interest, percentage, discount); language arts; German; string orchestra.

Grade 7: Arthurian legends, Renaissance history; voyages of discovery; American history and geography; physics (electricity, magnetism); elementary chemistry; physiology (blood, muscles); health and nutrition; algebra; geometry; business math (profit and loss); language arts; German; string orchestra.

Grade 8: Epic and dramatic poetry; world geography; industrial revolution; French revolution; modern history; physiology (human skeleton); physics; nutrition and hygiene; algebra; geometry; language arts; elementary chemistry; meteorology; German; string orchestra.

For more information about this remarkable curriculum, visit www.WhyWaldorfWorks.org.

TUITION 2010-11.

Paid annually, July–May.

Preschool

Ages 3-5, 8:15 a.m. to 12:30 p.m.

Three-day: Tuesday - Thursday \$3295

Five-day: Monday - Friday \$6365

Kindergarten

Ages 5-6, 8:15 a.m. to 12:30 p.m.

Five-day: Monday - Friday \$6365

Elementary Grades and Middle School \$7215

Grades 1-8, 8:15 a.m. - 2:15 p.m. Mon-Fri

Grades 1-5 in Prairie Hall; Grades 6-8 in Middle School

SUPPLY FEES.

Paid annually in June or upon enrollment.

Preschool, 3-day \$205 per child

Preschool, 5-day \$280 per child

Kindergarten \$280 per child

Grades 1-8 \$215 per child

CAPITAL PROJECTS FEE.

\$250 per family, paid annually by March 1 or upon enrollment.

TUITION ADJUSTMENT.

Tuition Adjustment applications are available online at www.olympiawaldorf.org or upon request. Olympia Waldorf School strives to serve every family seeking Waldorf education.

SIBLING DISCOUNTS.

Families with two or more children enrolled in the school are eligible for the following discounts:

Two children: oldest at full tuition, second at 30% discount

Three children: oldest at full tuition, second at 30%, third at 60% discount

Four or more: oldest at full tuition, second at 30%, third at 60%, fourth or more at 90% discount

EXTENDED CARE.

We are committed to helping parents balance the demands of work, school, and home life. We offer a broad range of year-round care. Forms available at www.olympiawaldorf.org or by request in the Main Office.

ANNUAL GIVING.

All families are requested to complete an Annual Giving Pledge Card. Annual Giving helps to fund expenses not covered by tuition, enables the school to provide scholarships, provides a tax-deductible opportunity for patrons of the school, and demonstrates to outside donors our internal financial strength.

Olympia Waldorf School

Preschool
Kindergarten
Elementary School
Middle School



www.olympiawaldorf.org
info@olympiawaldorf.org
360-493-0906

WALDORF EDUCATION.

Olympia Waldorf School offers a developmentally appropriate, experiential approach to education. We integrate the arts and academics for children from preschool through eighth grade. Waldorf education aims to inspire life-long learning in all



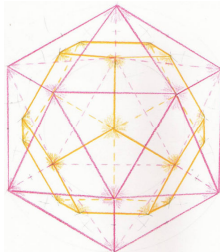
Eurythmy—speech through movement—builds self-esteem through the mastery of the body.

students and to enable them to fully develop their unique capacities.

Founded in the early 20th century, Waldorf education is based on the insights, teachings and principles of education outlined by the world-renowned

anthroposophist, artist, and scientist, Rudolf Steiner. The principles of Waldorf education evolve from a profound understanding of human development that address the needs of the growing child. These principles inspire and guide teachers, administrators, trustees and parents today.

The Waldorf curriculum is broad and comprehensive. Rudolf Steiner stressed to teachers that the best way to provide meaningful support for the child is to comprehend these phases fully and to bring “age appropriate” content that nourishes healthy growth for the Waldorf student. Music, dance and theater, writing, literature, legends and myths are not simply subjects to be read about and tested. They are experienced. Through these experiences, Waldorf students cultivate their intellectual, emotional, physical and spiritual capacities to be individuals certain of their paths and to be of service to the world.



Form drawing in the early grades builds a capacity for formal geometry later.

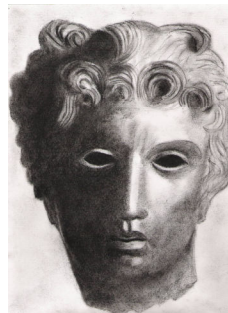
Teachers in Waldorf schools are dedicated to generating inner enthusiasm for learning within every child. This eliminates the need for competitive testing, academic placement, and behavioristic reward to motivate learning and allows motivation to arise from within. It helps engender the capacity for joyful life-long learning.

EARLY CHILDHOOD.

Our Waldorf Early Childhood program is warm and welcoming and utilizes a full range of creative activities appropriate to the young child, such as creative play, rhythm and movement, finger plays, singing and circle games. A weekly rhythm is established in which the children experience bread baking, modeling with beeswax, watercolor painting, beeswax crayon drawing and seasonal crafts. Fairy tales and nature stories are told and are further enlivened through puppet plays and simple drama. The program is pre-academic, allowing for the essential “work” of the young child—to play, to learn to interact socially, to function in a rhythmic way, and to prepare for the academics of the grades. Early Childhood teachers provide a solid foundation for academic learning by developing and protecting the child’s imagination, inspiring their sense of wonder, and instilling in them a reverence for life.



In the Waldorf kindergarten, physics is experienced through play.



Sixth grade charcoal drawing.

GRADES 1 - 8.

The creative methodology and unique curriculum of Waldorf education is committed to academic excellence in order to foster the capacities of thinking, feeling and willing. A broad

range of Main Lessons, including language, arts, science, mathematics, history and geography, are taught by the class teacher in blocks of three to six weeks. Our program cultivates academics artistically through practical activities to awaken each student’s thinking, creativity and will. This includes movement, foreign language, handwork, painting, beeswax or clay modeling, music, drawing, games and drama.



All grades students learn to play beautiful music on recorders.



OUR CAMPUS.

Olympia Waldorf School is a non-profit organization established in 1985. OWS is situated on several acres of field, garden, and woodland, in rural East Olympia. Our campus includes Prairie Hall, a historic school building built in 1914, an impressive Middle School building, and a charming Kinderhaus, complete with Kinderwoods. OWS is located just 15 minutes from downtown Olympia.



Our Middle School students are remarkable.

CONTACT US:
Olympia Waldorf School
8126 Normandy Street SE
Olympia, WA 98501
360-493-0906 phone
360-493-0835 fax
info@olympiawaldorf.org
www.olympiawaldorf.org
www.WhyWaldorfWorks.org